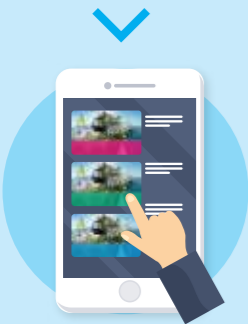


## REGISTER ONLINE IN JUST 5 MINUTES



Scan QR Code or visit  
[member.onefabergroup.com](http://member.onefabergroup.com)  
to register



Select membership type  
and enter details



Complete payment  
and receive welcome  
SMS to Sign In

### FABER LICENCE MEMBERSHIP TERMS & CONDITIONS:

- The Faber Licence 1 Year Membership is valid for 1 year from the date of payment for the membership.
- The Faber Licence Membership means that you will not only be issued a Faber Licence Membership Card in either a physical format or a digital format (to be determined by Mount Faber Leisure Group Pte Ltd ("MFLG") ("Card/Digital Card")) but you will also be given access to possible rewards, discounts, privileges, promotions, offers, services and/or products, offered by MFLG, MFLG's related corporations or associated companies, as well as partners, merchants and/or third party organisations with whom MFLG may collaborate, partner or tie up with (collectively the "Member Benefits") (MFLG's related corporations or associated companies, as well as partners, merchants and/or third party organisations with whom MFLG may collaborate, partner or tie up shall be referred to as "MFLG Partners").
- The Card/Digital Card is non-transferable.
- All prevailing privileges and discounts are offered only upon presentation of a valid Card/Digital Card by you (subject to the terms and conditions set out herein) and are not applicable with any other special offers or promotions. Member(s) must be present to enjoy all privileges and discounts offered unless otherwise indicated.
- One person can apply and own only one Faber Licence Membership Card/Digital Card, unless otherwise determined by MFLG in its absolute discretion.
- Services on the Singapore Cable Car Sky Network may be disrupted for maintenance works to comply with a necessary maintenance schedule or during periods of adverse weather. No refund or compensation shall be provided for such periods of service disruption.
- A family membership is made up of immediate family members consisting of spouse, parents, grandparents, children, siblings or domestic helpers as long as the application is for a maximum of 4 persons.
- Wrongful use of the Card/Digital Card shall be subject to immediate termination and withdrawal of privileges.
- In order to process, administer and/or manage your Faber Licence Membership with MFLG, MFLG will necessarily need to collect, use, disclose and/or process your personal data or personal information about you. Such personal data includes information entered during sign up and any other personal information relating to you that is provided by you or possessed by MFLG, from time to time.
- MFLG reserves the right to amend, withdraw or terminate any part of the benefits & privileges, terms and conditions of the Card/Digital without prior notice. In the event of dispute, the decision of MFLG will be final.
- MFLG reserves the right to reject any application and to terminate the Card/Digital Card without refund if the terms and conditions of the Card/Digital Card are not complied with.
- Please be advised that parking at Faber Peak coach bay/valet parking area are strictly reserved for events and diners only, not open to public. Alternate public parking are available at Carpark B and C (First Come First Serve) which is 8-10 mins walk to our Mount Faber cable car station.
- By converting/renewing your existing Faber Licence membership to the new digital membership, members would require to surrender their physical membership cards, current privileges for physical card (e.g. complimentary vehicle entry to Sentosa and complimentary rides on Sentosa Express) will no longer be valid and will be replaced by privileges offered in the new digital membership.

For more information on membership privileges, please log on to  
[www.onefabergroup.com](http://www.onefabergroup.com)

### SIGN UP AS A MEMBER AT [MEMBER.ONEFABERGROUP.COM](http://MEMBER.ONEFABERGROUP.COM) OR AT THESE MEMBERSHIP COUNTERS

#### Mount Faber Station (Mount Faber Peak)

Weekdays: 10.30am - 7pm  
Weekends & Public Holiday: 9am - 7pm

#### Merlion Station

Operating hours: 11am - 7pm daily

#### For Membership Enquiries,

Call (65) 6377 9688

Operating hours: 10.30am - 7pm daily

Email us at [Faberlicence@onefabergroup.com](mailto:Faberlicence@onefabergroup.com)

[www.onefabergroup.com](http://www.onefabergroup.com)

OneFaberGroup

#### Faber Licence Membership Application (Offline)

Please hand this membership form to any One Faber Group ticketing counter. Upon completion, we will contact you within 5 working days.

#### Membership Type:

(New)

\$45 Individual

\$155 Family (Up to 4 members)

(Renewal)

\$45 Individual

\$155 Family (Up to 4 members)

Name on Card (Main Cardholder – Max 20 Character):

.....

Mobile Number:

Email Address:

.....

I have read and agree to the Faber Licence Terms & Conditions, including as to how my personal data may be collected, used, disclosed and processed, as set out in Mount Faber Leisure Group Pte Ltd's (MFLG) Data Protection Policy. I confirm that all information and details of myself and my sub-Card applicants are true, correct and complete. Where I have provided personal data of individuals other than myself, I warrant and represent that I am validly acting on behalf of each of these individuals, and I have obtained their individual consents, to disclose their personal data to MFLG and for MFLG to use, collect, disclose and process their personal data for the purpose of the membership and in accordance to the Faber Licence Terms & Conditions.

I acknowledge and understand that marketing materials relating to Member Benefits may be sent by MFLG to me and can be unsubscribed.

Signature of Applicant:

Date:

.....

.....



All information is correct at time of printing. Mount Faber Leisure Group Pte Ltd reserves the right to make changes without further notice.

© Apr 2021



## FABER LICENCE YOUR YEAR-LONG ESCAPE

**UNLIMITED CABLE CAR RIDES**

**DINING & SHOPPING PERKS,  
AND MORE**



**SIGN  
FROM JUST  
\$45 PER  
YEAR**  
Just top up \$10 from a  
Cable Car ticket  
(U.P. \$35)

# Fly, Play & Dine All Year Round

Come onboard, where a new lifestyle awaits! Sign up today to enjoy privileges for attractions, restaurants and shopping at a touch of your phone!



- ✓ Cable Car Rides for Mount Faber and Sentosa Lines all year round
- ✓ Flash your digital membership to board



- ✓ F&B vouchers & discounts
  - ✓ Discounts at attractions
  - ✓ Free retail gift
- Check out our app for the updated list of benefits



- ✓ Complimentary 500g birthday cake<sup>^</sup> worth \$35.30.

<sup>^</sup> Valid with min. \$100 spend (3 days advance booking is required).

## YEAR-LONG PRIVILEGES



**20% OFF**  
TOTAL BILL  
(min. spend \$50  
applies after  
6pm)



Dine in the brand new Arbora surrounded by the majestic rainforest hillside that will captivate you with its unique garden dining experience. Admire the great views surrounding Mount Faber Park, the Sentosa-HarbourFront precinct and running cable car line over a delicious meal of Western classics with botanical inspired beverages.

**Location: Mount Faber Peak, Level 2**



**20% OFF**  
TOTAL BILL  
(min. spend \$80  
applies after  
6pm)



Surrounded by lush rainforest, Dusk Restaurant & Bar offers the best sunset on a hilltop, European tapas, a range of specially curated cocktails and extensive wine selections. Here you will find unique nitro-frost cocktails to end your evening on all-time high from Dusk till dawn!

**Location: Mount Faber Peak, Level 2**



**20% OFF**  
TOTAL BILL  
(min. spend \$30  
applies after  
6pm)



### Good Old Days Food Court

After a sun-kissed day at the beach, head over to the air-conditioned Good Old Days Food Court for a delightful meal.

### Good Old Days Western Grill

Good Old Days Western Grill is committed to serving quality Western Grill cuisine at affordable prices.

**Location: 60 Siloso Beach Walk, Singapore 098997**

WELCOME	
<b>ONE FABER GROUP</b>	
<b>Arbora</b>	• Complimentary Salad of your choice with any purchase (U.P. \$16)
<b>Gold Old Days Western Grill</b>	• Complimentary Satay Dish with any purchase (U.P. \$8.80)
<b>Singapore Cable Car Gift Shops &amp; FUN Shops Sentosa</b>	• Free teddy bear keychain with any purchase (U.P. \$7.80)

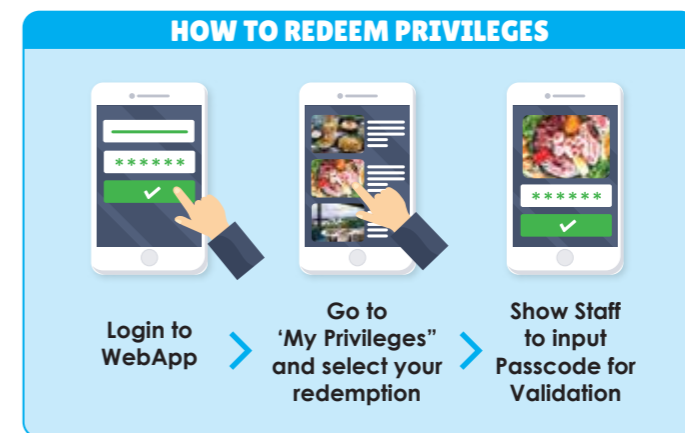
EAT	
<b>ONE FABER GROUP</b>	
<b>Arbora</b>	• 20% off total bill (min. spend of \$50 applies after 6pm)
<b>Dusk</b>	• 20% off total bill (min. spend of \$80 applies after 6pm)
<b>Good Old Days</b>	• 20% off total bill (min. spend of \$30 applies after 6pm)
<b>Cable Car Sky Dining – Stardust Cabin</b>	• Complimentary bottle of wine (worth \$70)
<b>PARTNERS</b>	
<b>EAC @ Siloso Beach Resort</b>	• 20% off for food & beverages (Not applicable for breakfast & promotional items)
<b>Silver Shell Café (Shangri-La's Rasa Sentosa)</b>	• 20% off total bill
<b>Trapizza (Shangri-La's Rasa Sentosa)</b>	• 20% off total bill (Valid from Monday to Thursday)
<b>Co+Nut+ink</b>	• 10% off Premium Ice Cream

PLAY	
<b>ONE FABER GROUP</b>	
<b>Singapore Cable Car</b>	• Unlimited Cable Car Rides for cardholders • 50% off Cable Car Sky Pass (Round Trip) (up to six tickets) • Daily Operating Hours: 8:45am – 8:30pm (Last boarding at 8pm)
<b>PARTNERS</b>	
<b>Madame Tussauds Singapore</b>	• 20% off full experience package • 24% off VR experience package
<b>Butterfly Park &amp; Insect Kingdom Pte Ltd</b>	• 20% off admission tickets
<b>4D AdventureLand</b>	• 20% off Sentosa 4D AdventureLand "4-in-1" combo package (U.P. \$46.90 per adult and \$33.90 per child)
<b>Trick Eye Museum</b>	• 20% off admission tickets
<b>iFly Singapore</b>	• 10% off Challenge Package (U.P. \$119)
<b>Skyline Luge</b>	• \$2 off FIT packages for 2, 3, 4 rides
<b>Gogreen Segway Eco Adventure</b>	• 20% off Activities
<b>Play Nation (All Outlets)</b>	• Buy Any 3 Packages Get 1 Free
<b>HaveFun Karaoke (313 Somerset, Bugis Cube &amp; Downtown East)</b>	• Purchase 2 hours room rate and get 3rd hour free (Only valid on Monday - Thurs whole day, Friday before 6pm and Sunday after 6pm, excluding PH and Eve of PH) • Pay for 2 pax and 3rd pax sings for free (Only valid on Monday - Thurs whole day, Friday before 6pm and Sunday after 6pm, excluding PH and Eve of PH) • Free flow soft drink with any purchase of liquor (Valid all day all time)
<b>Escape Artist (HarbourFront)</b>	• 25% off for cardholders
<b>Nestopia (Shangri-La's Rasa Sentosa)</b>	• 15% off admission tickets

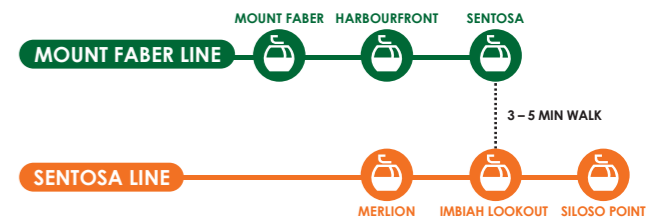
SHOP	
<b>ONE FABER GROUP</b>	
<b>Singapore Cable Car Gift Shops</b>	• 20% off regular priced products
<b>FUN Shops Sentosa</b>	• 20% off regular priced products
<b>PARTNERS</b>	
<b>ASICS</b>	• 10% off regular priced products

STAY	
<b>Siloso Beach Resort</b>	• 15% off for Deluxe Room
<b>Shangri-La's Rasa Sentosa Resort &amp; Spa</b>	• 10% off Best Flexible Rate

BIRTHDAY	
<b>ONE FABER GROUP</b>	
<b>Arbora</b>	• A complimentary 500g birthday cake worth \$35.30 (Valid with min. \$100 spend (3 days advance booking is required). • 20% off total bill
<b>PARTNERS</b>	
<b>Escape Artist (Harbourfront)</b>	• Complimentary game for birthday member



### SINGAPORE CABLE CAR SKY NETWORK



### NEW 1 YEAR MEMBERSHIP

	New Sign Up	Renewal**
<b>INDIVIDUAL MEMBERSHIP</b>	\$45	\$45
<b>FAMILY* MEMBERSHIP</b>	\$155	\$155

\*For up to **four** immediate family members or your domestic helper. Immediate family members consist of grandparents, parents, siblings and children.

\*\*Renewal rate is applicable up to 3 months after expiry of membership.